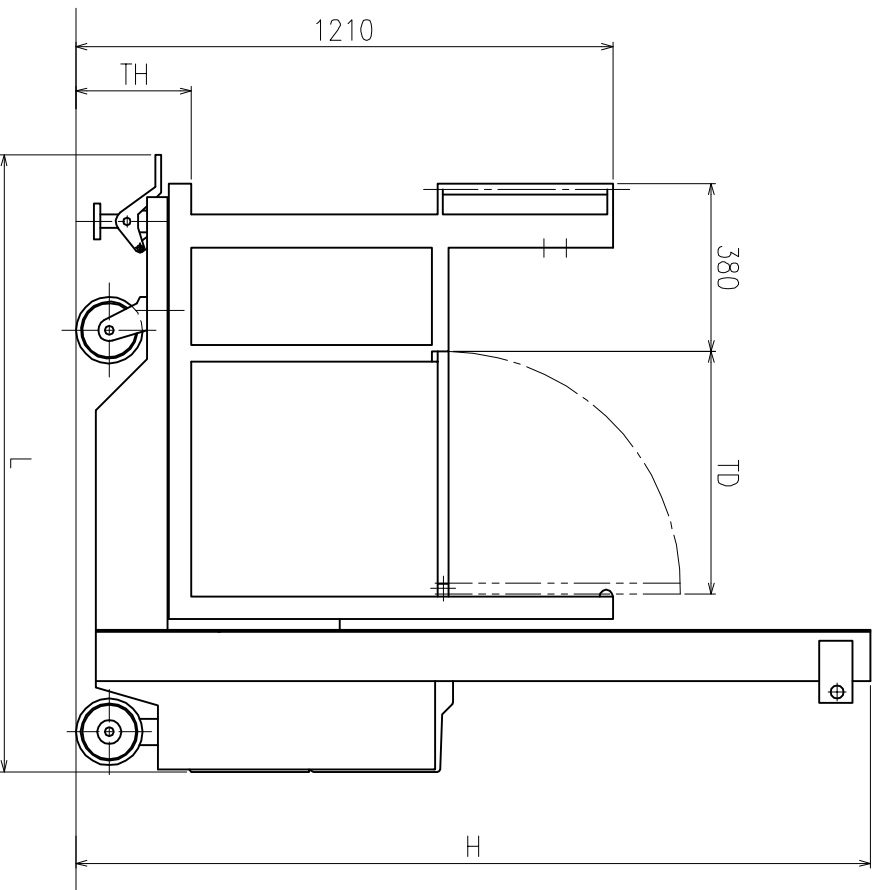
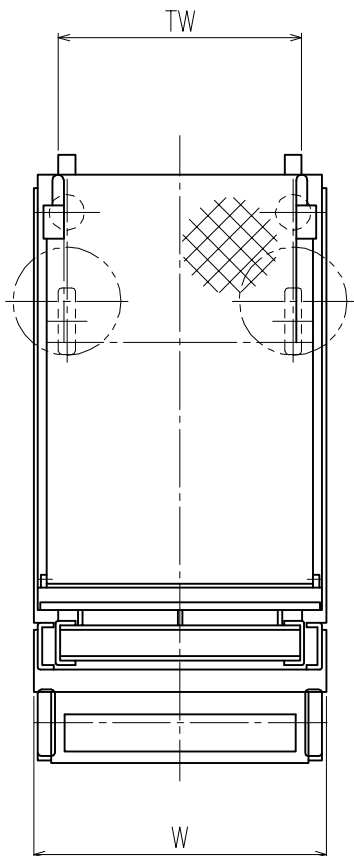


## KHR Series



Main Specification	Manually Driving	
	KHR210	KHR220
Load	200kg	200kg
Lifting Height	260~1500mm	260~2500mm
Lifting Speed	120mm/s	120mm/s
Driving Speed	-	-
Table Width	TW 640mm	640mm
Table Depth	TD 550mm	550mm
Floor Size	W640 × D930mm	W640 × D930mm
Width	W 665mm	665mm
Length	L 1380mm	1390mm
Height	H 1900mm	1790mm
Battery	12V 50AH/5h	12V 100AH/5h
Battery Charger	5A (Built-in Type)	5A (Built-in Type)
Service Weight	240kg	300kg